

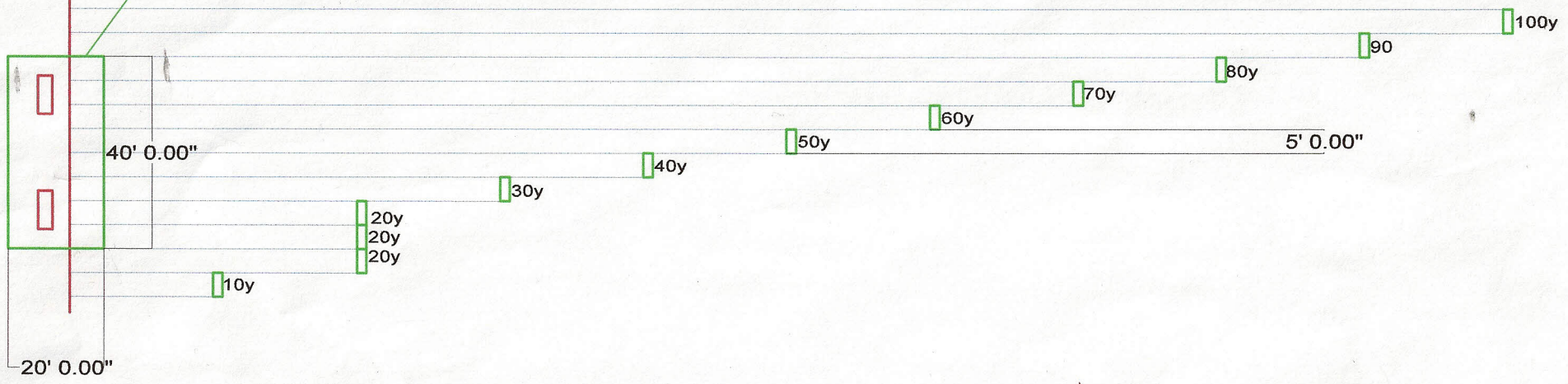
# #1

SITIN5

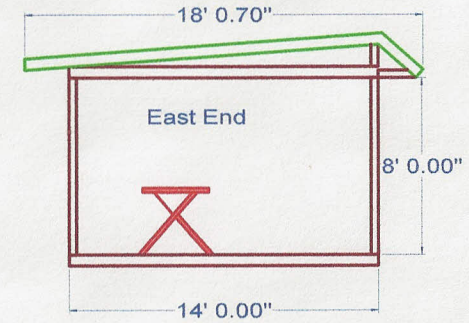
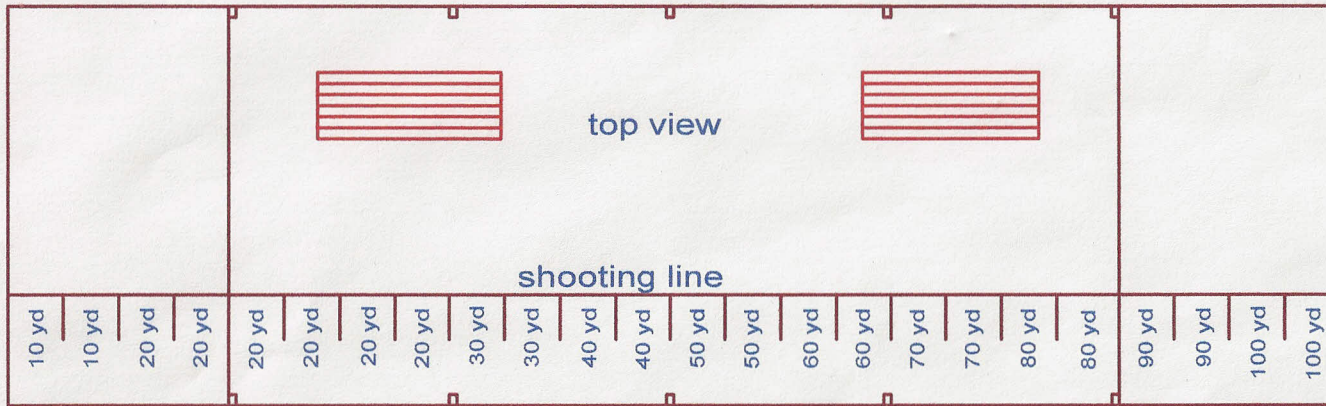
Shooting Line

Cover

Shoot under 40' X 20' roof  
8- 5' Lanes (2 shooters can shoot in each lane)  
Shoot 20yd to 80yd under roof  
3 20yd target butts  
50 to 100 yd targets 24" higher than shorter targets

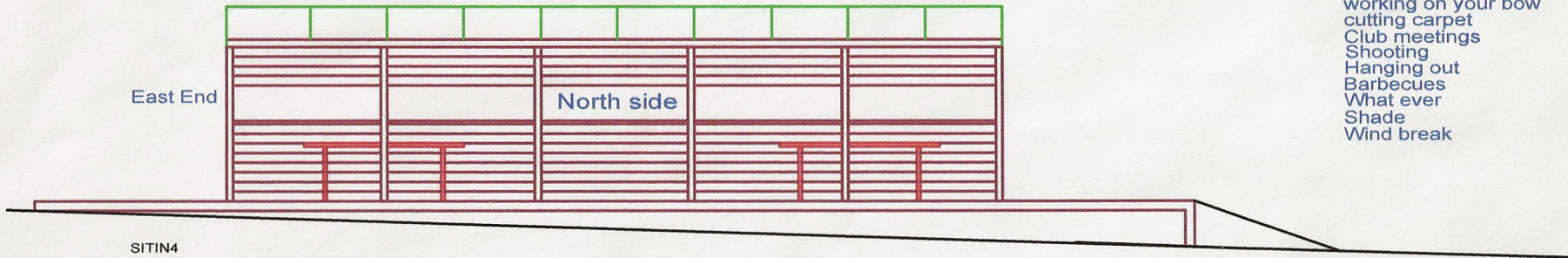


# #1 cont.



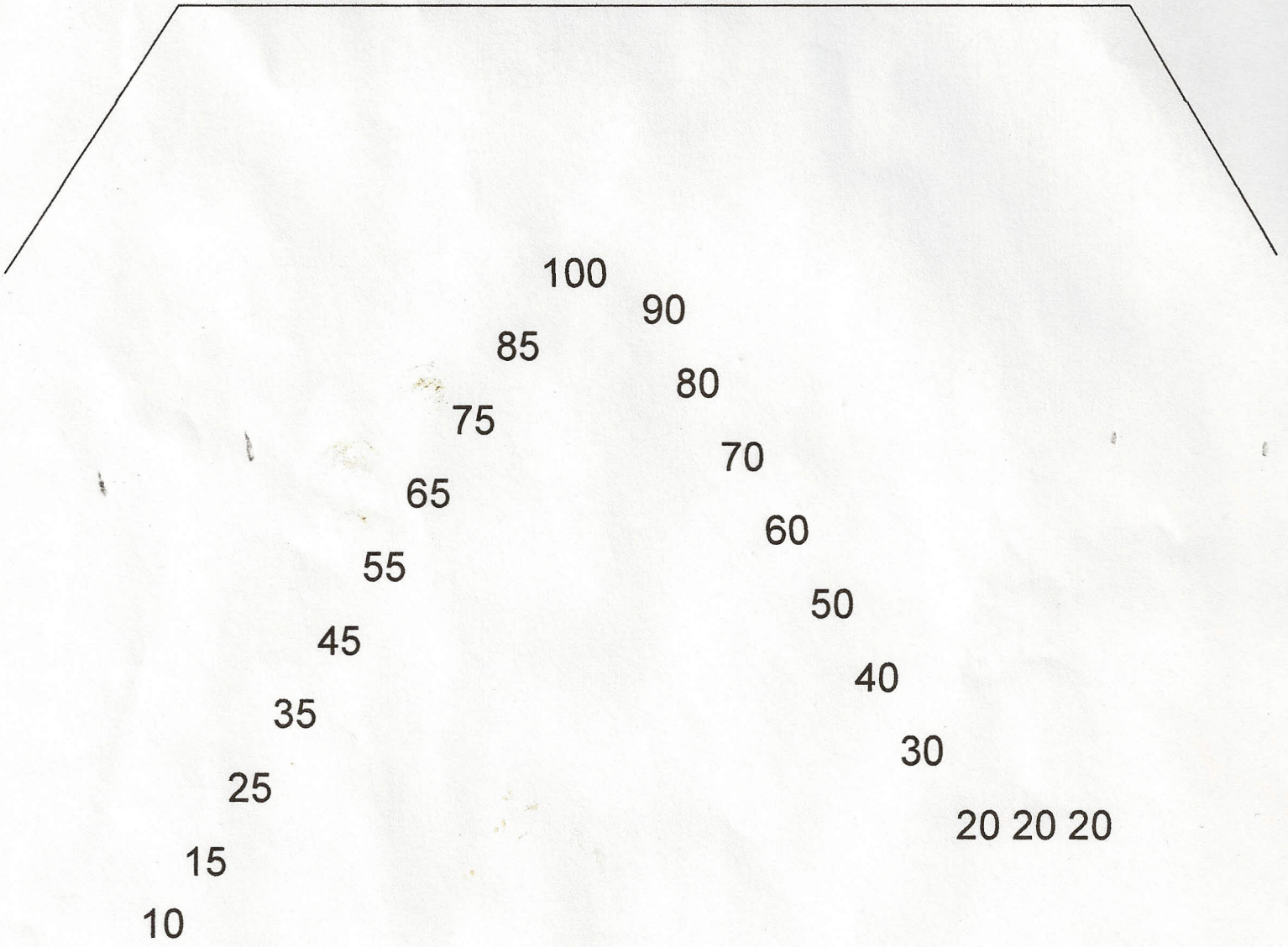
Cover can be used for

- working on your bow
- cutting carpet
- Club meetings
- Shooting
- Hanging out
- Barbecues
- What ever
- Shade
- Wind break



#2

6' fence



*Covered*

concreat shooting line flat 4' wide stair step if needed

25x25

covered